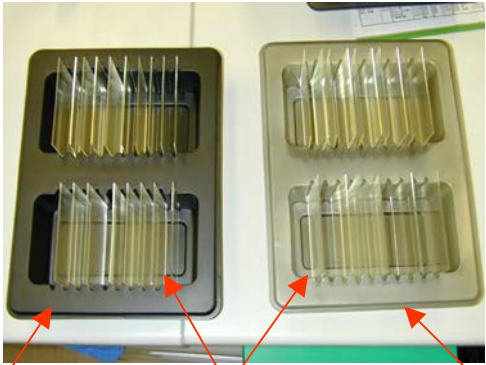


**Abrasion Test Comparison of Electron LIFELL™ Sheet Tray and Printed PS Tray**



LEC-21 tray      Light guide plates      Conventional (printed PS) tray

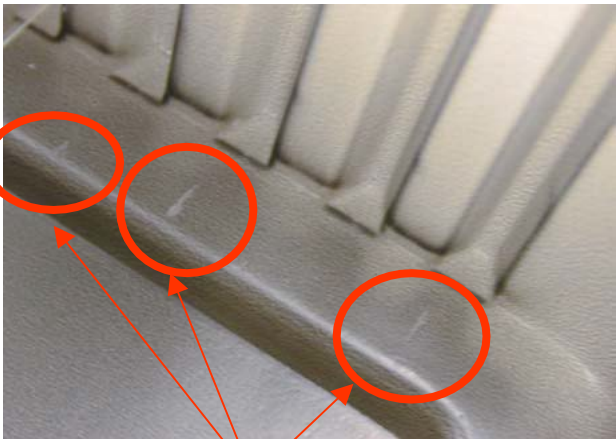


Trays are placed in a vibration-testing machine

Light guide plates are placed in the trays

**State of Samples Before Test**

Tray bottom

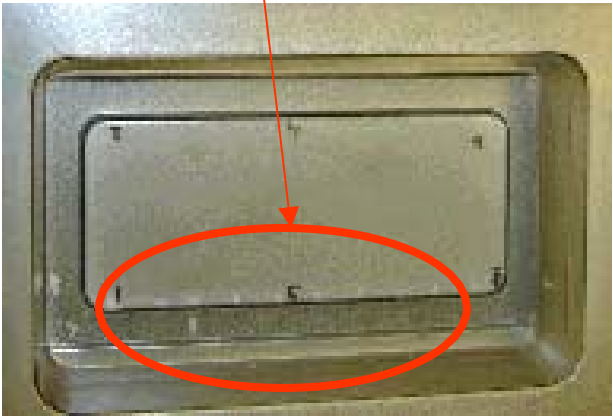


Scratches from vibration (print is coming off)

Tray lid



Before



After

**Tray Before and After Test (Printed PS Tray)**

Tray bottom



No scratches after test

Tray lid



Before



After

## Tray Before and After Test (LEC-21 Electron LIFELL™ Sheet)

### Test Conditions

- (1) Test trays: conventional tray (carbon printing on PS sheet), LEC-3 tray (n=1)
- (2) Vibration-testing machine: shaker with 1 Hz, amplitude 50 mm
- (3) Vibration direction: in vertical direction to trays (same direction as engine vibration during transportation)
- (4) Test duration: 48 hours (172,800 vibration cycles)
- (5) Equivalent transport time: approx. 2,000 km (equivalent to two hours of the JIS transport test)

Note: One hour of the JIS transport test assumes 100,000 vibration cycles for 1,000 km.